



**Optic  
Systems™**

[opticsystems.io](http://opticsystems.io)



# EXPERIENCE YOUR WORKSITES, **Virtually Everywhere.**

Revolutionizing Inspections with  
Cutting-Edge 360° Video Technology

---



# INTRODUCTION

Welcome to Optic Systems, where we blend innovation with practicality. We're excited to introduce our advanced approach to virtual inspections and asset management, leveraging the rapid capabilities of 360-degree video technology. Our unique and patented system offers not just a service, but a gateway to unmatched efficiency and precision in inspections, monitoring, and management.

As the umbrella company for four specialized subsidiaries—Compliance View 360, Public Works 360, MyBuild 360, and Landscape 360—Optic Systems champions specialized diversification. Each brand is committed to improving various aspects of virtual inspections through our modular software platform. Yet, the real power of our approach is in the integration of shared resources. Across all subsidiaries, we draw on the same expert team, cutting-edge equipment, and our proprietary system and methods.



*WESLEY F. HUNT, CEO & CO-FOUNDER  
OPTIC SYSTEMS*



# OUR FAMILY OF BRANDS



Specializes in ensuring community compliance, managing work orders, overseeing vendor relations, and handling asset management for both commercial and residential developments.



Caters to commercial landscaping companies by providing a unique insight into the integration and enhancement of natural and built environments.



Focused on single-family construction and land development projects, offering comprehensive insights from the foundation to the final touches.



Concentrating on municipal and public infrastructure projects, including roads, sidewalks, parks, and other related infrastructure elements.





# ABOUT

Compliance View 360, the original member of the Optic Systems family, is committed to revolutionizing community management by addressing HOA violations, streamlining work orders, and optimizing asset management. Our expertise lies in capturing detailed, high-definition 360-degree video footage with our cutting-edge cameras, expertly designed for comprehensive community oversight. These sophisticated cameras, mounted on our fleet of vehicles or affixed to our inspectors' headgear, offer unparalleled perspectives, enabling thorough inspections and asset documentation.

Our mission is to redefine the scope of community management by offering a 360-degree view of all property under your care. We believe that an immersive visual experience is essential for precise assessments, strategic planning, and executing effective property and asset management for both board members and management companies alike.



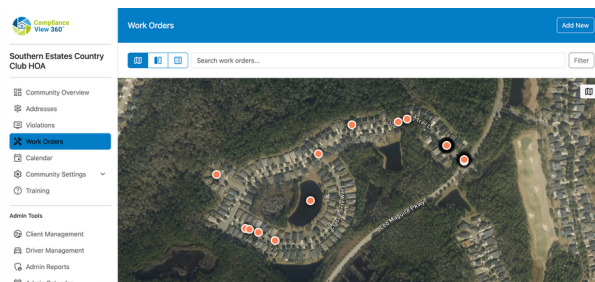


## OUR VALUE TO YOU

**Advanced Technology:** Our premier 360-degree video cameras provide a complete view from every angle, surpassing the capabilities of standard mobile applications, manual driving or walking inspection methods, and traditional camera systems.

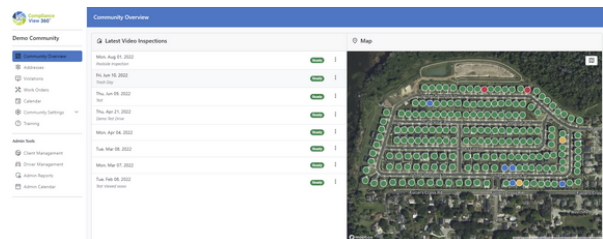


**Comprehensive Management Solutions:** Beyond compliance, our technology supports extensive work order processing and asset management, offering users unmatched viewing and data analysis capabilities. This enables stakeholders to swiftly address compliance, maintenance, and asset management needs, ensuring comprehensive community care and all documentation to support management decisions.



**Enhanced Communication:** Tailored to meet the unique needs of community management, our services and software platform facilitate seamless interaction between inspection teams, board members, and community managers, ensuring everyone is well-informed and in sync. This clarity improves transparency and community relations.

**Safety and Efficiency:** Our 360-degree insights are critical for monitoring compliance and asset conditions and gives users the ability to efficiently capture and manage this information in a safe, hands-free, digital panoramic environment while also covering every aspect of their community.

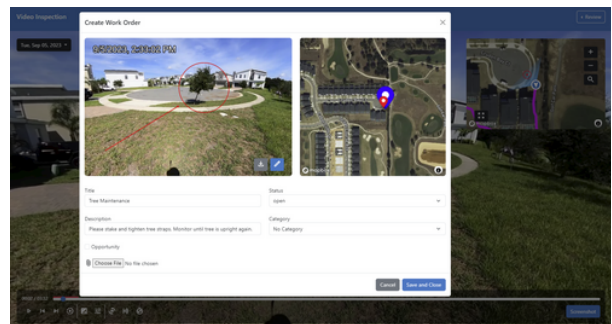


**Moving You Into the Future:** We are eager to explore partnership opportunities and confident that our technology can significantly enhance your operations. Our team is prepared to show how Compliance View 360 can address your specific community management needs and help move your management team into the future.



# ABOUT

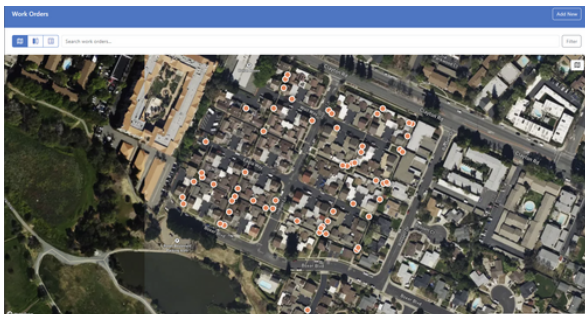
Landscape 360, part of the Optic Systems family, revolutionizes landscape inspections and quality assurance for both commercial and residential properties. Our unique approach utilizes advanced, high-definition 360-degree video cameras to capture comprehensive footage of your site, providing an unparalleled perspective when mounted on vehicles or worn by our inspectors. This technology allows for detailed scrutiny of every aspect of your landscape, ensuring identification, documentation, and rectification of all quality concerns and enhancement opportunities efficiently. Landscape 360 optimizes landscape management and aesthetics, driving cost savings and revenue growth through innovative technology and efficient project execution.





## OUR VALUE TO YOU

Transform the way you engage with prospects and clients using Landscape 360. Our platform enables you to vividly showcase the potential and proposed improvements of any site directly to your clients, turning every pitch and proposal into a compelling visual journey. This powerful tool not only captivates your audience but also significantly boosts your ability to secure new contracts and unlock additional enhancement opportunities. Imagine presenting not just ideas, but visions of future success, directly aligning with your clients' aspirations, thereby accelerating your sales cycle and expanding your portfolio.



**Efficient Documentation:** Our 360-degree technology offers panoramic documentation of landscapes, aiding in effective resource management and issue identification.

**Asset and Opportunity Management:** Every day, your team will uncover and act on enhancement opportunities with precision, driving both client satisfaction and revenue growth.

### **Revolutionary Estimating Process:**

Our platform reduces the need for time-consuming onsite visits, enabling your team to provide quick and accurate estimates, speeding up the sales cycle.

Date	Image	Category	Description	ID	Status
12/19/2023		Uncategorized	Replace Privacy Shrubs Plants Life Near Expired	\$ 250.00 #54	Open
12/19/2023		Uncategorized	Remove Replace Shrubs in Plant Bed Plants were killed due to frost. Please remove and replace.	\$ 65.00 #55	New
12/19/2023		Uncategorized	Walkway Snow rake fallen leaves from pathway	#57	Closed

### **Operational Expansion Without**

**Overextension:** Expand your business reach without diluting your quality of service, thanks to our platform's efficiency in managing operations across a broader geographic landscape.

**Empowerment of Your Team:** With tools that simplify their work and enhance their capability, your employees will experience greater job satisfaction and productivity, directly contributing to your bottom line.

### **Your Return on Investment:**

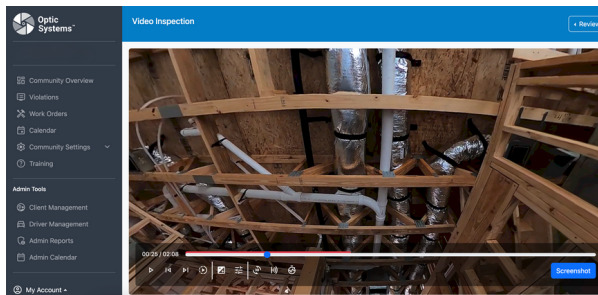
Landscape 360 is more than a tool—it's your partner in scaling your commercial landscape business to new heights. By offering a unique blend of visualization, operational efficiency, and strategic planning capabilities, we're not just optimizing your business processes; we're transforming the way you connect with clients and manage your projects.





# ABOUT

MyBuild 360, is a multi-dimensional member of the Optic Systems family, and is designed for use by land developers and home builders looking to manage their site from inception through final buildout. Our specialization lies in obtaining detailed, high-definition 360-degree video footage through our advanced cameras. These state-of-the-art cameras are strategically mounted on our fleet of vehicles or securely attached to our inspectors' headgear, providing a unique and comprehensive vantage point.



This innovative method allows you to meticulously scrutinize every aspect of your sites or homes as they are under construction, and ensures that all of the stages are identified and documented properly.



## OUR VALUE TO YOU

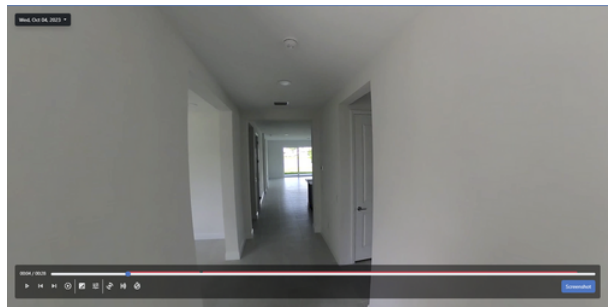
**Advanced Technology:** Our unparalleled 360-degree video cameras offer exhaustive coverage, surpassing what traditional inspection methods can achieve. This technology gives stakeholders a superior understanding and control, allowing for swift, data-driven decision-making on each of their sites and during the construction of each of their homes.

**Customized Solutions:** Tailored specifically for the needs of new home builders and land developers, our technology offers unmatched panoramic viewing and data analytics capabilities. This facilitates rapid adaptation to changing construction and site conditions, ensuring effective project oversight.



**Safety and Efficiency:** Our comprehensive 360-degree visualizations are essential for maintaining construction quality and safety. They enable stakeholders to identify and mitigate potential hazards more effectively, reducing risks and liabilities for builders.

**Interactive Sales Trail:** An immersive narrative of the development journey engages buyers, highlighting milestones and community features, and builds anticipation. Plus your sales teams can showcase real-time construction progress and pristine site conditions to potential buyers, building trust and excitement.



**Engaging Out-of-State Buyers:** High-definition, panoramic videos allow distant buyers to virtually visit and monitor their future homes, ensuring they're well-informed throughout the buying process.

**Efficiency Boost:** Streamlining the sales process, this technology minimizes the need for physical site visits and maximizes sales team productivity.

**Improved Communication:** We tackle the unique challenges of new home sales and land development head-on by promoting transparency and a mutual understanding amongst sales teams, construction managers, buyers, and development teams.





# ABOUT

Public Works 360, an integral member of the Optic Systems family, is dedicated to enhancing city and municipal inspections and addressing code enforcement issues with precision. Our specialization lies in obtaining detailed, high-definition 360-degree video footage through our advanced cameras systems and providing that to you in an interactive virtual format via our proprietary software platform. These state-of-the-art cameras are strategically mounted on our fleet of vehicles or securely attached to our inspectors' headgear, providing a unique and comprehensive vantage point. This innovative method allows you to meticulously scrutinize every aspect of your city and ensure that all code enforcement and city assets are identified and documented correctly.





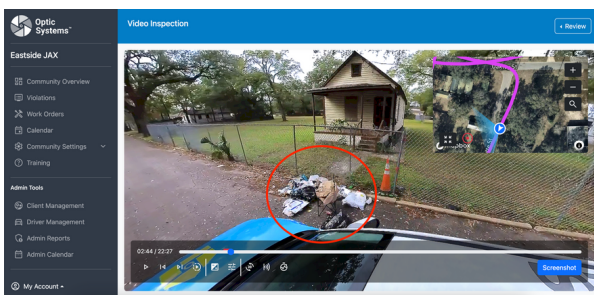
## OUR VALUE TO YOU

### Comprehensive Asset Documentation:

Our advanced 360-degree video capture technology creates detailed records of city assets, allowing for efficient management and upkeep. By providing a panoramic view of infrastructure, our service aids in the identification and prioritization of maintenance and repair work, ensuring that resources are allocated effectively.

### Proactive Code Enforcement:

Our service enhances the ability of code enforcement officers to proactively manage and enforce codes and ordinances. By regularly documenting the condition of properties and construction sites, we enable the early detection of potential violations, facilitating timely interventions and reducing the likelihood of more significant issues developing.



Streamlined City Planning and Development: The comprehensive visual data we capture supports city planning and development efforts by offering a detailed understanding of existing

conditions. This insight is invaluable for assessing the impact of proposed projects, planning infrastructure improvements, and ensuring that developments comply with city codes and ordinances.

### Risk Management and Mitigation:

Our technology plays a critical role in risk management by providing detailed visual evidence that can be used to assess vulnerabilities within the city's infrastructure. This capability allows for the implementation of preventive measures, mitigating risks before they lead to costly or dangerous situations.

### Asset Lifecycle Management:

We facilitate regular inspections and monitoring to extend the lifecycle of city assets. This proactive approach helps identify issues early, allowing for maintenance and repairs that prolong the usability and efficiency of infrastructure, thereby optimizing city resources.

### Enhanced Stakeholder Engagement:

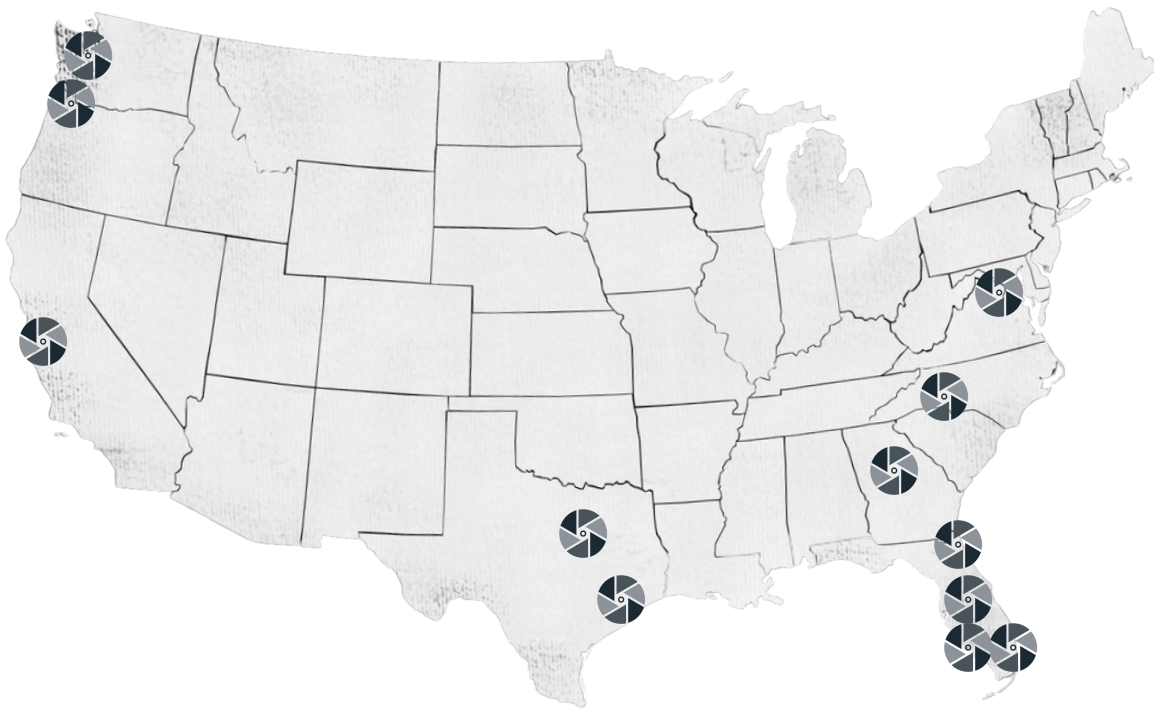
Our service improves stakeholder communication and engagement by providing clear, visual representations of projects and assets. This transparency helps build community trust, ensuring that projects align with public expectations and city goals.



**Optic  
Systems™**


opticsystems.io

# COVERAGE AREAS




Don't See Your Area? Let's Map  
Out New Possibilities Together!

**CONTACT US TO LEARN MORE**

 [OpticSystems.io/contact](https://www.OpticSystems.io/contact)

 [Sales@OpticSystems.io](mailto:Sales@OpticSystems.io)

 (904) 902-1360